

SUNDAY BRUNCH

Tilda®

My Sunday Best
Quilt Teal



My Sunday Best Quilt

(Teal colourway)

Spring and summer are the seasons to dress for romance, and dreamy floral prints are wonderful for Sunday best dresses. This gorgeous quilt has four different dress motifs, all perfect for relaxed sewing on balmy days. The colour palette of the Sunday Brunch collection is gentle but with a dash of sour for freshness, with colours ranging from teal, green, soft greys and yellows to ginger, pinks, blues and sands. For an extra decorative touch, adding some Sunday Brunch buttons would be perfect. This quilt has a pretty teal Chambray background and there is another quilt in this design with a delicate blush-coloured Chambray background, plus pillows in two different colourways – see tildasworld.com for the instructions.

Difficulty rating **

Materials

- Fabric 1: 4³/₄yds (4.5m) – Chambray teal (160004) (background)
- Fabric 2: a fat eighth or a ¼yd (25cm) (see Fabric Notes) – White Flower teal (100581)
- Fabric 3: a fat eighth or a ¼yd (25cm) – Mille lime (100582)
- Fabric 4: a fat eighth or a ¼yd (25cm) – Pernille teal (100583)
- Fabric 5: a fat eighth or a ¼yd (25cm) – Mia teal (100584)
- Fabric 6: a fat eighth or a ¼yd (25cm) – Sunday Brunch teal (100585)
- Fabric 7: a fat eighth or a ¼yd (25cm) – Sunday Brunch grey (100586)
- Fabric 8: a fat eighth or a ¼yd (25cm) – Mia sour yellow (100587)
- Fabric 9: a fat eighth or a ¼yd (25cm) – Pernille yellow (100588)
- Fabric 10: a fat eighth or a ¼yd (25cm) – Mille grey (100589)
- Fabric 11: a fat eighth or a ¼yd (25cm) – White Flower sour yellow (100590)
- Fabric 12: a fat eighth or a ¼yd (25cm) – White Flower pink (100591)
- Fabric 13: a fat eighth or a ¼yd (25cm) – Mille ginger (100592)
- Fabric 14: a fat eighth or a ¼yd (25cm) – Pernille pink (100593)
- Fabric 15: a fat eighth or a ¼yd (25cm) – Mia pink (100594)
- Fabric 16: a fat eighth or a ¼yd (25cm) – Sunday Brunch ginger (100595)
- Fabric 17: a fat eighth or a ¼yd (25cm) – Sunday Brunch blue (100596)
- Fabric 18: a fat eighth or a ¼yd (25cm) – Mia blue (100597)
- Fabric 19: a fat eighth or a ¼yd (25cm) – Pernille sand (100598)
- Fabric 20: a fat eighth or a ¼yd (25cm) – Mille sky (100599)
- Fabric 21: about a 5in (12.7cm) square – White Flower sand (100600)
- Fabric 22: a fat eighth or a ¼yd (25cm) – Topsy green (110114)
- Fabric 23: a fat eighth or a ¼yd (25cm) – Topsy teal (110115)
- Fabric 24: a fat eighth or a ¼yd (25cm) – Topsy cream/blue (110116)
- Fabric 25: a fat eighth or a ¼yd (25cm) – Topsy yellow (110117)
- Fabric 26: a fat eighth or a ¼yd (25cm) – Topsy grey (110118)
- Fabric 27: a fat eighth or a ¼yd (25cm) – Topsy sour yellow (110119)
- Fabric 28: a fat eighth or a ¼yd (25cm) – Topsy ginger (110120)
- Fabric 29: a fat eighth or a ¼yd (25cm) – Topsy pink (110121)
- Fabric 30: a fat eighth or a ¼yd (25cm) – Topsy cream/pink (110122)
- Fabric 31: a fat eighth or a ¼yd (25cm) – Topsy blue (110123)
- Fabric 32: a fat eighth or a ¼yd (25cm) – Topsy sky (110124)
- Fabric 33: about a 5in (12.7cm) square – Topsy sand (110125)

- Wadding (batting): 66in x 88in (167.5cm x 223.5cm)
- Backing fabric: 5yds (4.6m) – Topsy cream/blue (110116)
- Binding fabric: $\frac{5}{8}$ yd (60cm) – Chambray moss (160034)
- Piecing and quilting threads
- Quilter’s ruler, rotary cutter and mat
- Erasable fabric marker
- Sunday Brunch buttons 14mm (400069) – for decoration (optional – approx. 60 buttons)

Fabric Notes

A fabric cut of a long quarter of a yard is more than you need but will give extra for pillows or perhaps a second quilt. However, it is more economical to use fat eighths, which are assumed to be approximately 10½in x 18in (26.7cm x 45.7cm).

Finished Size

57½in x 80½in (146cm x 204.5cm)

General Notes

- Fabric quantities are based on a usable width of 42in (107cm), unless otherwise stated.
- Measurements are in imperial inches with metric conversions in brackets – use only *one* system throughout (preferably inches). Width measurements are generally given first.
- Before using your fabrics, press before cutting and trim as needed to square up the fabric pattern/weave, using a quilting ruler to cut the top raw edge at 90 degrees to the selvages.
- Use ¼in (6mm) seams unless otherwise instructed.
- Read all the instructions through before you start.
- Always make one complete block as a test before going on to make the remaining blocks.

Quilt Layout

1 The quilt is made up of thirty dress blocks, with four different dress designs. Dress Blocks 1 and 2 each have eight different colourways, while Dress Blocks 3 and 4 each have seven different colourways. Note that the bottom of each block has the same Dress Skirt shape, so only the dress tops are different (Dress Top 1, Dress Top 2, Dress Top 3, and Dress Top 4). Vertical sashing pieces separate the blocks and horizontal sashing separates the quilt rows. See **Fig A** for the fabrics used and **Fig B** for the quilt layout.

Fig A Fabric swatches (My Sunday Best Quilt – Teal)

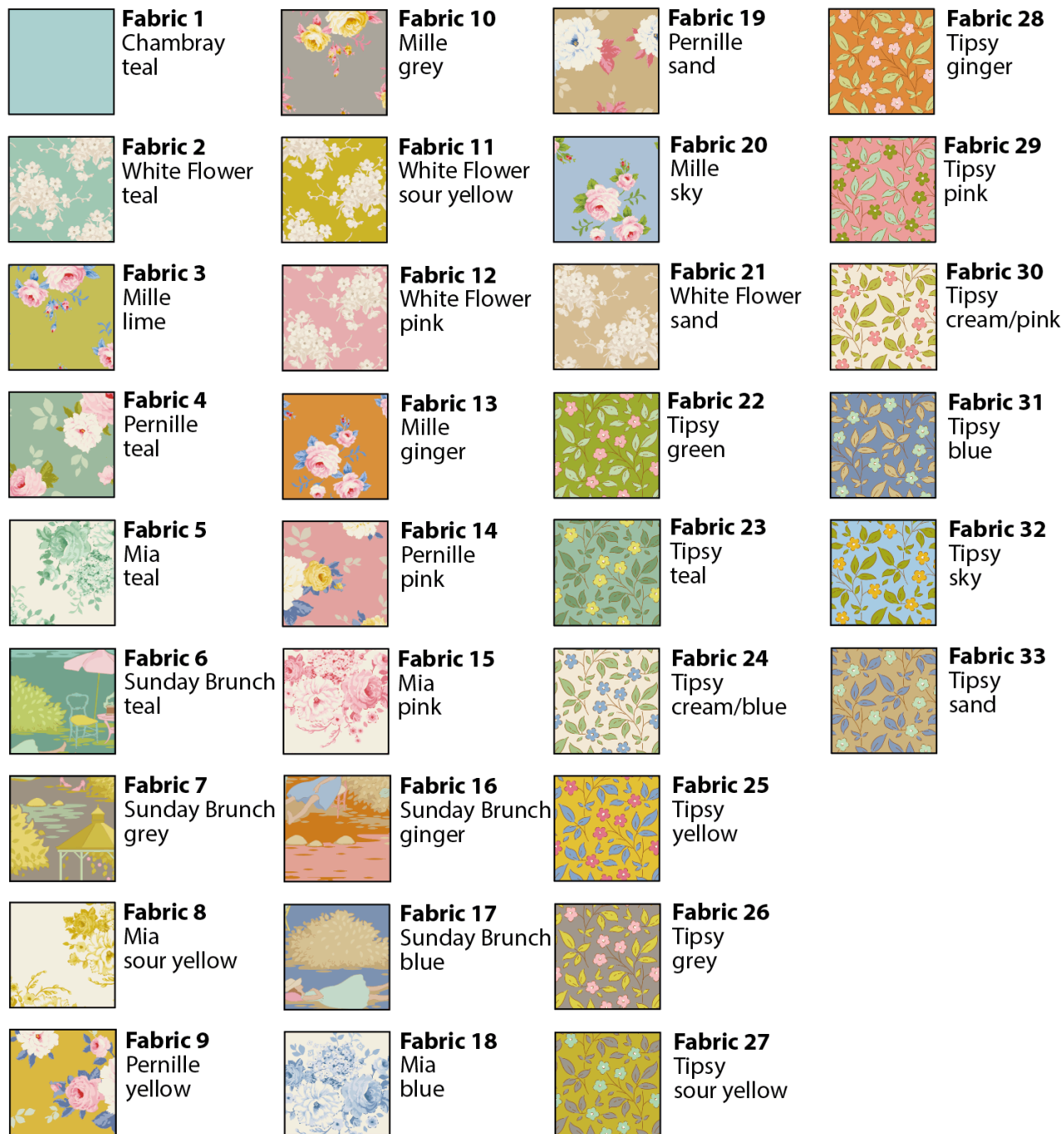


Fig B Quilt layout (My Sunday Best Quilt – Teal)



Cutting Out

2 Start by cutting the sashing pieces for the quilt from the background fabric (Fabric 1). Cut the strips across the width of the fabric.

- For Sashing 1 (vertical), cut thirty-six strips 2½in x 11½in (6.4cm x 29.2cm).
- For Sashing 2 (horizontal), cut fourteen strips 29in x 2½in (73.7cm x 6.4cm). Using ¼in (6mm) seams, sew together into seven pairs to make seven strips 57½in (146cm) long. Press seams open.

3 Cut the fabrics for the blocks following the cut measurements given in **Fig C**, choosing the correct pattern and measurements for the four different dress tops.

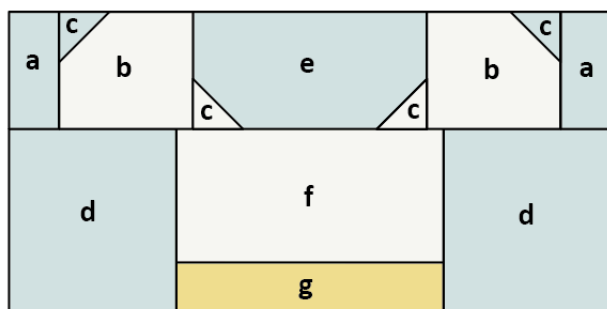
Refer to **Fig D** for the fabrics used and their positions in Dress Block 1 and Dress Block 2.

Refer to **Fig E** for the fabrics used and their positions in Dress Block 3 and Dress Block 4.

Fig C Cut measurements for Dress Tops and Skirt

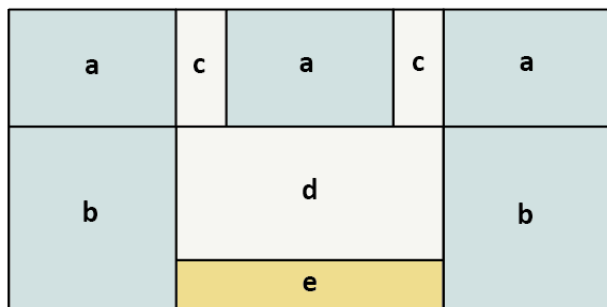
Sizes include ¼in (6mm) seam allowances

All pieces to be cut initially as squares or rectangles



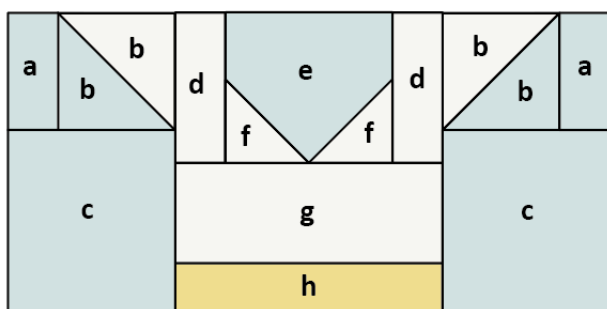
Dress Top 1

- a 1½in x 2¼in (3.2cm x 5.7cm)
- b 2½in x 2¼in (6.4cm x 5.7cm)
- c 1½in (3.2cm) square
- d 3in x 3¾in (7.6cm x 8.3cm)
- e 4in x 2¼in (10.2cm x 5.7cm)
- f 4½in x 2¼in (11.4cm x 6.4cm)
- g 4½in x 1½in (11.4cm x 3.2cm)



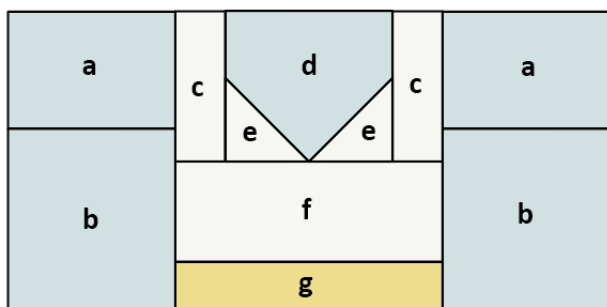
Dress Top 2

- a 3in x 2¼in (7.6cm x 5.7cm)
- b 3in x 3¾in (7.6cm x 8.3cm)
- c 1½in x 2¼in (3.2cm x 5.7cm)
- d 4½in x 2¼in (11.4cm x 6.4cm)
- e 4½in x 1½in (11.4cm x 3.2cm)



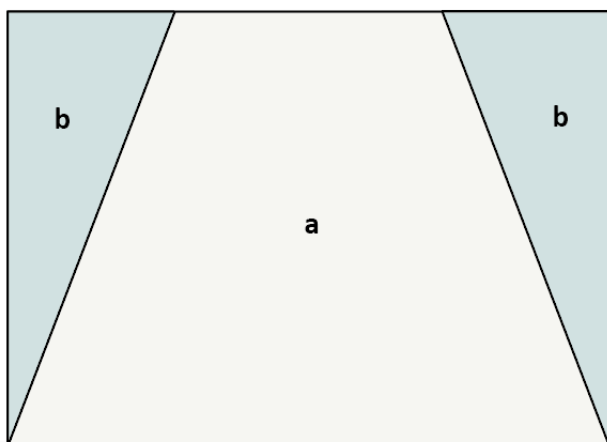
Dress Top 3

- a 1½in x 2¼in (3.2cm x 5.7cm)
- b 2½in (6.7cm) square, to make 2¼in (5.7cm) unfinished half-square triangles
- c 3in x 3¾in (7.6cm x 8.3cm)
- d 1½in x 2¾in (3.2cm x 7cm)
- e 3in x 2¾in (7.6cm x 7cm)
- f 1½in (4.4cm) square
- g 4½in x 2in (11.4cm x 5.1cm)
- h 4½in x 1½in (11.4cm x 3.2cm)



Dress Top 4

- a 3in x 2¼in (7.6cm x 5.7cm)
- b 3in x 3¾in (7.6cm x 8.3cm)
- c 1½in x 2¾in (3.2cm x 7cm)
- d 3in x 2¾in (7.6cm x 7cm)
- e 1½in (4.4cm) square
- f 4½in x 2in (11.4cm x 5.1cm)
- g 4½in x 1½in (11.4cm x 3.2cm)



Dress Skirt

- a 9½in x 7in (24.1cm x 17.8cm)
- b 3in x 7in (7.6cm x 17.8cm)

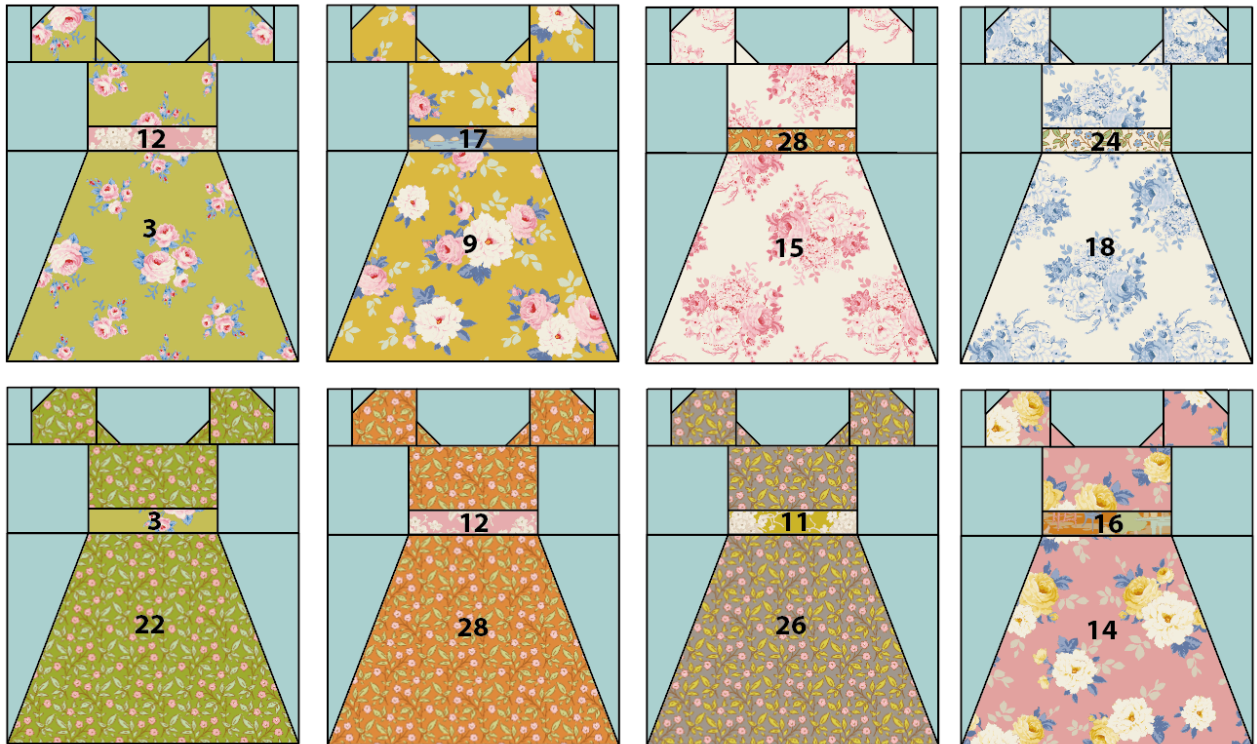
Whole Dress block:

- 9½in x 11½in (24.1cm x 29.2cm) unfinished

Fig D Block colourways for Dress Blocks 1 and 2

Bold numbers indicate fabrics to use (see Fig A). All background is Fabric 1. Make one of each block shown

Dress Block 1



Dress Block 2

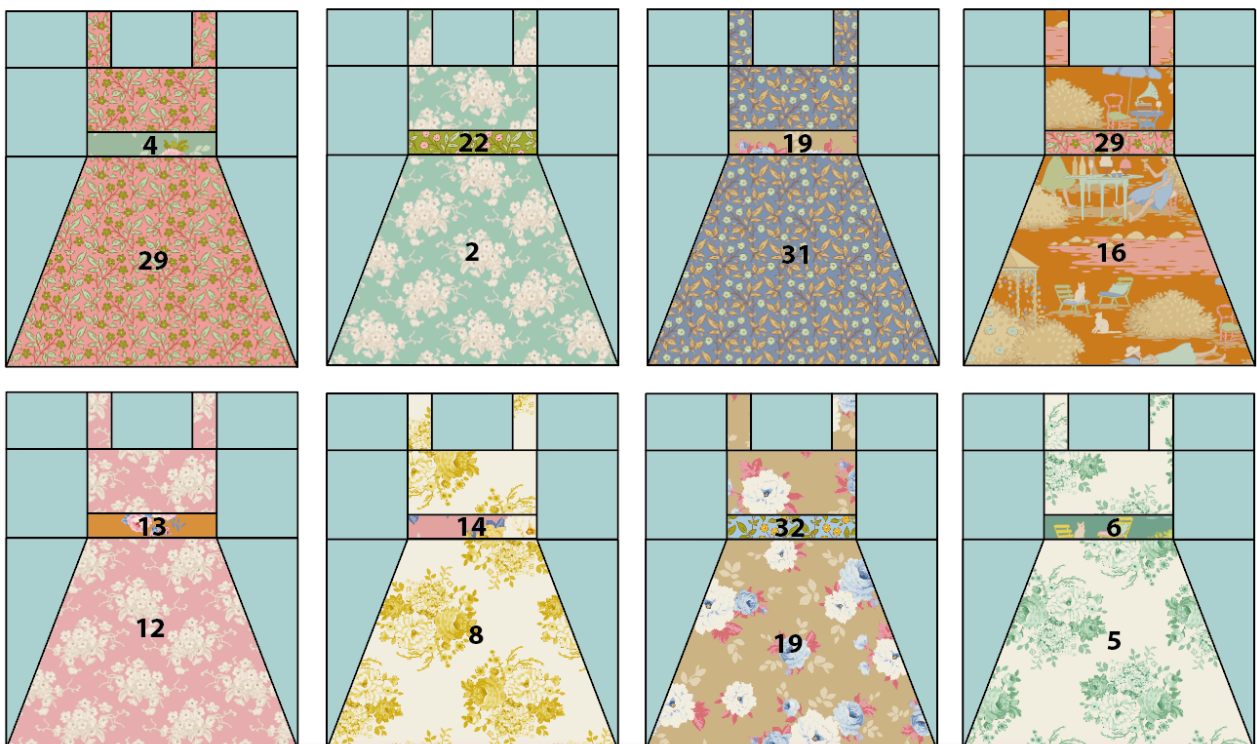
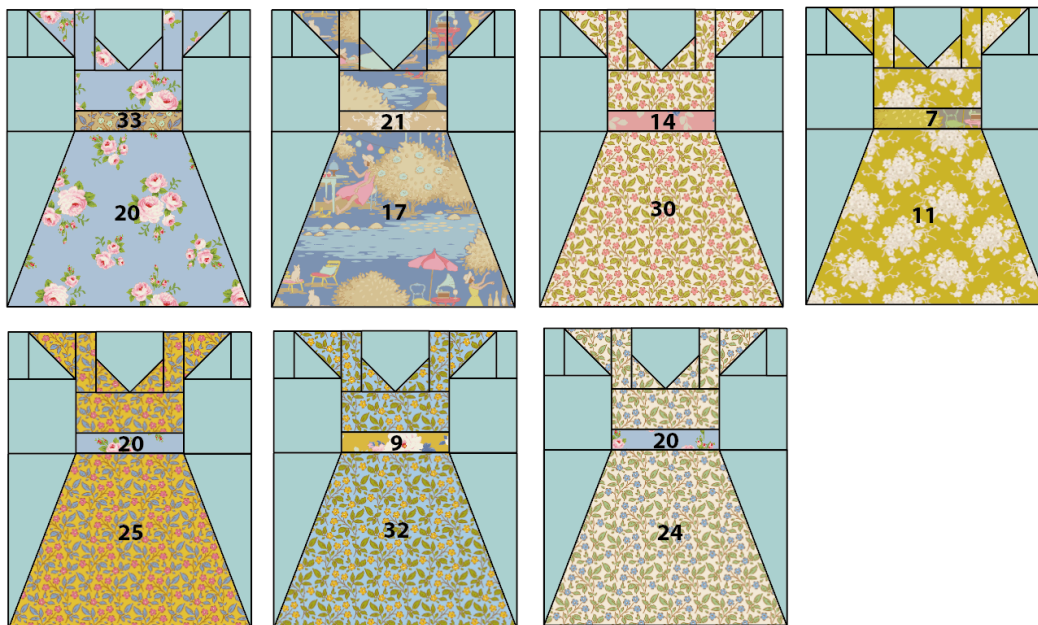


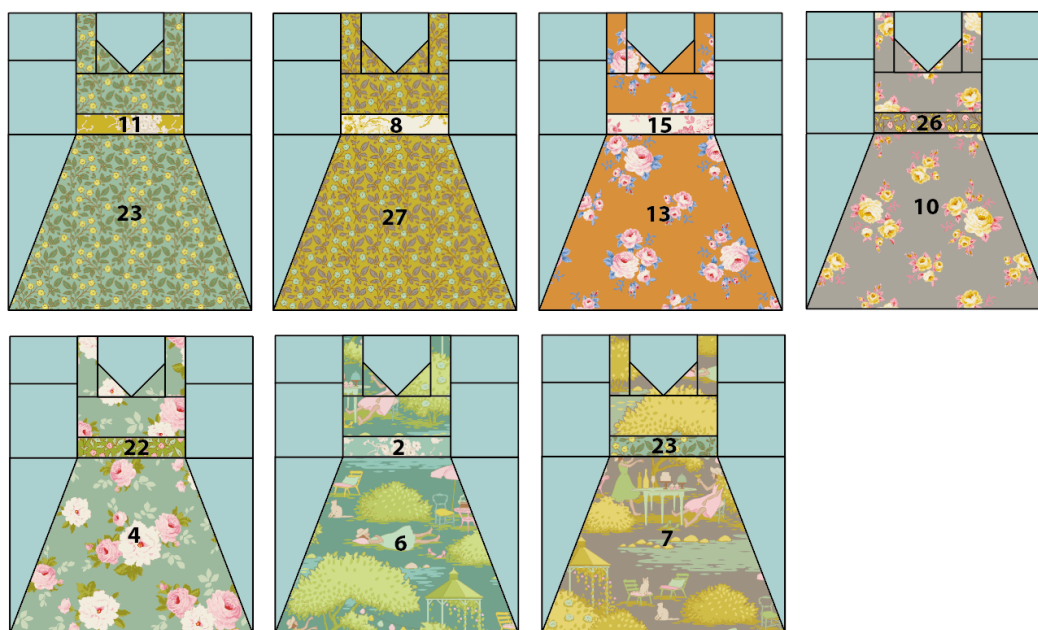
Fig E Block colourways for Dress Blocks 3 and 4

Bold numbers indicate fabrics to use (see Fig A). All background is Fabric 1. Make one of each block shown

Dress Block 3



Dress Block 4



4 Cut the backing fabric across the width into two pieces. Using a 1/4in (6mm) seam, sew together along the long side and press the seam open. Trim to a piece about 66in x 88in (167.5cm x 223.5cm). This is about 4in (10.2cm) larger all round than the quilt top, to allow for quilting and finishing.

5 Cut the binding fabric into eight 2 1/2in (6.4cm) x width of fabric strips. Sew the strips together end to end and press seams open. Press the binding in half along the length, wrong sides together.

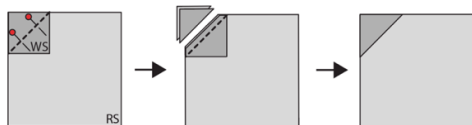
Making a Dress Block

6 The block has four different dress tops and the assembly of each one is described and illustrated. The dress tops have two main techniques, corner triangle units and half-square

triangle (HST) units. We will describe these techniques here, so refer back if needed when sewing the dress tops.

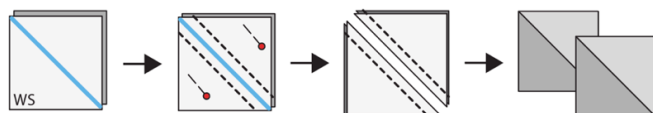
7 Making corner triangle units: The basic process is shown in **Fig F**. Take the larger piece of fabric and place it right side (RS) up. Take the smaller square and pencil mark the diagonal line on the wrong side. Pin the square right sides together with the larger piece of fabric, aligning the edges as shown and with the diagonal line in the direction needed. Sew along the marked line. Trim off excess fabric $\frac{1}{4}$ in (6mm) outside the sewn line and press the triangle outwards. Check the unit is the size it is supposed to be. Some units have more than one corner triangle.

Fig F Making a corner triangle unit



8 Making half-square triangle (HST) units: Dress Top 3 uses HSTs in its construction. The method described here makes two units at the same time, which means enough for one block. The process is shown in **Fig G**. Take two different squares and on the wrong side of the lighter square, pencil mark the diagonal line. Place the two squares right sides (RS) together and sew $\frac{1}{4}$ in (6mm) away from the marked line on both sides, as shown. Cut the units apart along the marked line and press the units. The seam is normally pressed towards the darker fabric. Check each unit is the size it is meant to be – for Dress Top 3 the HSTs should be $2\frac{1}{4}$ in (5.7cm) (unfinished).

Fig G Making half-square triangle units



Making a Dress Skirt

9 Before we look at the assembly of the Dress Tops, we will describe making the Dress Skirt units. These are all made the same way, but changing fabrics as needed to suit the specific Dress Top. The side angles of the skirt are created with a special technique, as follows and illustrated in **Fig H**.

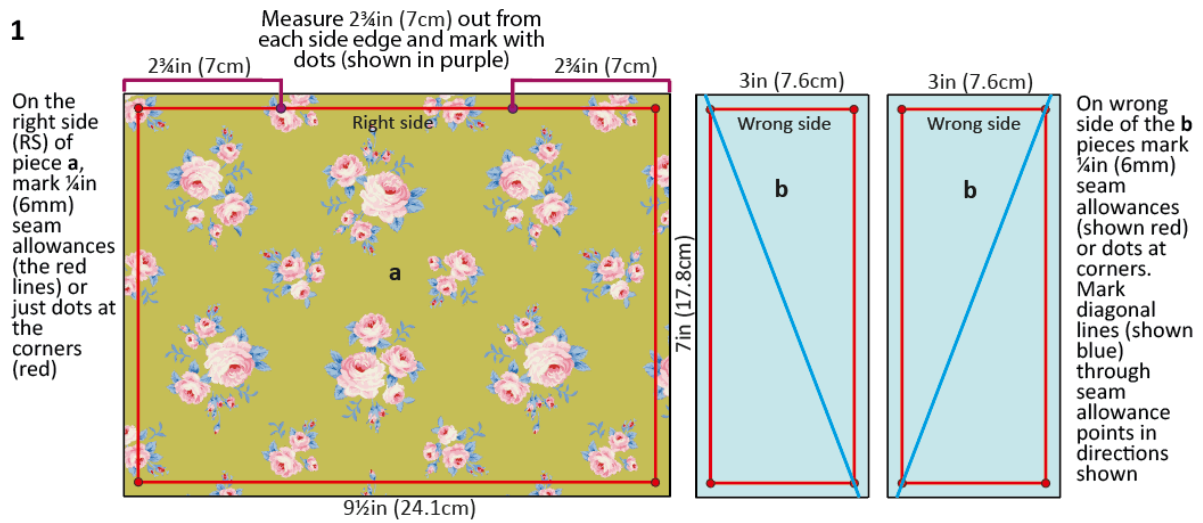
10 Take piece **a**, and on the right side (RS) use an erasable fabric marker to mark the $\frac{1}{4}$ in (6mm) seam allowances (shown in red on **Fig H 1**), or just mark dots if you prefer. At the top of the unit, mark a dot $2\frac{3}{4}$ in (7cm) out from each side edge (shown by purple dots). On the two background pieces **b**, on the wrong side (WS) pencil mark the $\frac{1}{4}$ in (6mm) seam allowances (or dots at the corners). Mark the diagonal lines in the directions shown, making sure the line goes through the seam allowance dots and *not* the outer corners of the fabric.

11 Take a background piece and with right sides together place it on the print fabric piece, angling it as in **Fig H 2**, so its top seam allowance dot meets the purple dot beneath, and so the seam allowance dots meet at the bottom. Pin in place. Repeat with the other background piece, but angling the opposite way, as shown. Now sew along each marked diagonal line.

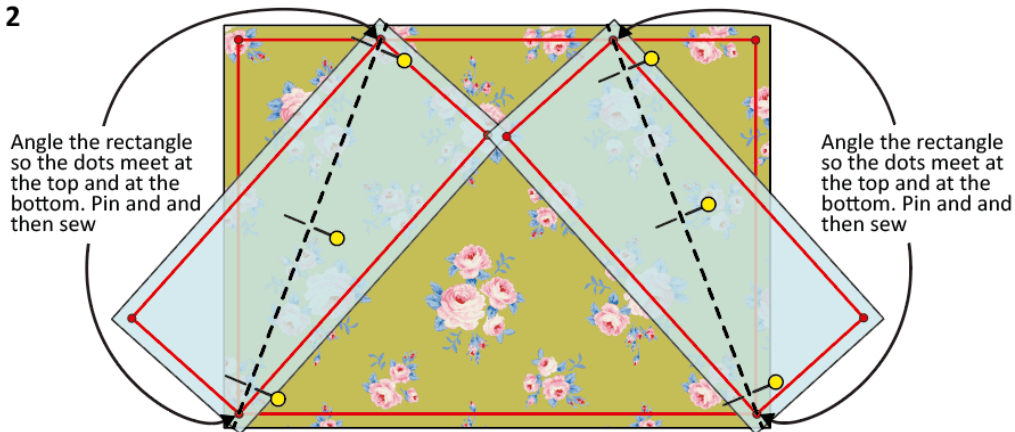
12 Using a quilting ruler, trim off excess fabric $\frac{1}{4}$ in (6mm) away from each of the sewn lines, as in **Fig H 3**. Press the triangles outwards and check that their edges are aligned with the edges of the print fabric piece (**Fig H 4**). Remove markings used.

Fig H Making a Dress Skirt unit

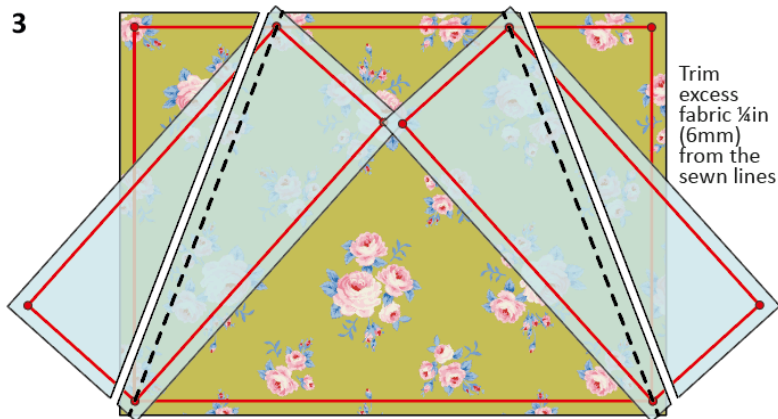
1



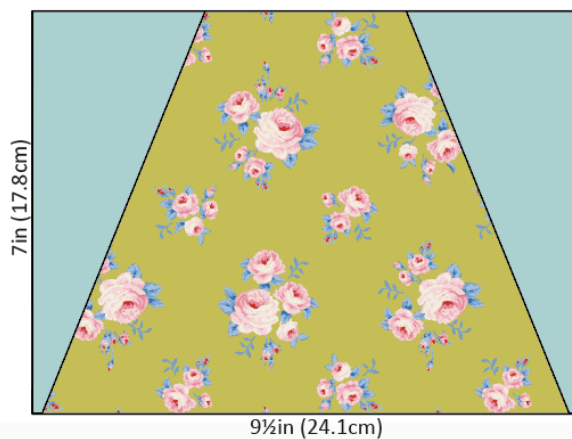
2



3



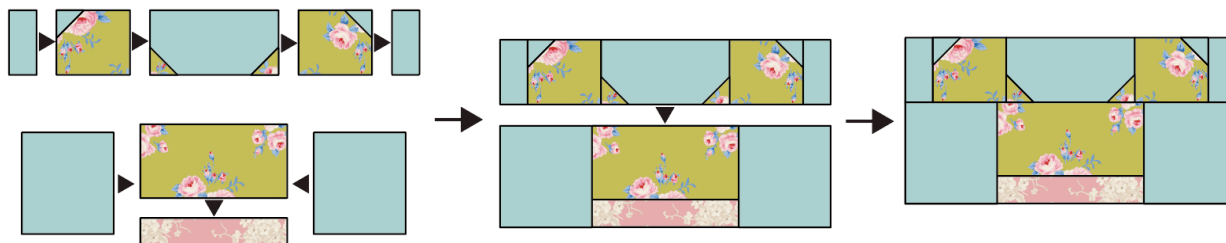
4



Assembling Dress Top 1

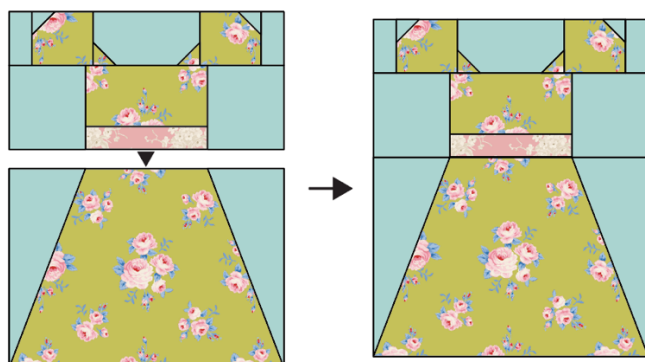
13 Make all of the pieced units needed for Dress Top 1 and then lay them out with the unpieced parts into roughly the layout of the unit. Sew the unit together following the stages in **Fig I**. When sewing pieces together, use $\frac{1}{4}$ in (6mm) seams and press seams open or to one side.

Fig I Assembling Dress Top 1



14 When a Dress Top is made, its corresponding Dress Skirt unit can also be made, so the whole block can be assembled. Dress Block 1 is shown in **Fig J**, but the rest of the blocks are assembled in the same way. Make sure the print fabric for the top is the same as the skirt. The sewn block should be $9\frac{1}{2}$ in x $11\frac{1}{2}$ in (24.1cm x 29.2cm) (unfinished).

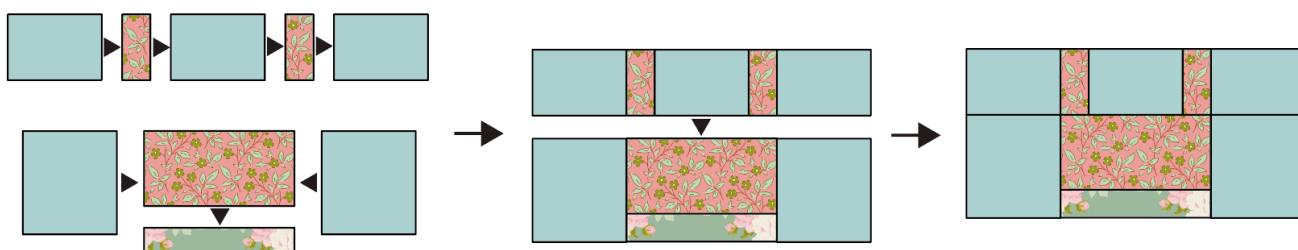
Fig J Assembling Dress 1



Assembling Dress Top 2

15 Make all of the pieced units needed for Dress Top 2 and then lay them out with the unpieced parts into roughly the layout of the unit. Sew the unit together following the stages in **Fig K**. Add the Dress Skirt unit to complete the block.

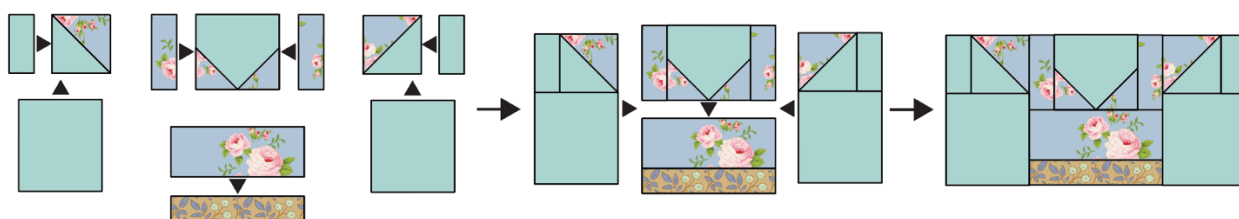
Fig K Assembling Dress Top 2



Assembling Dress Top 3

16 Make all of the pieced units needed for Dress Top 3 and then lay them out with the unpieced parts into roughly the layout of the unit. Sew the unit together following the stages in **Fig L**. Add the Dress Skirt unit to complete the block.

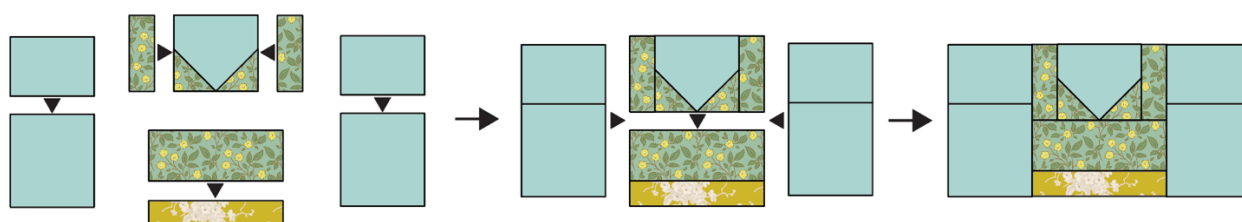
Fig L Assembling Dress Top 3



Assembling Dress Top 4

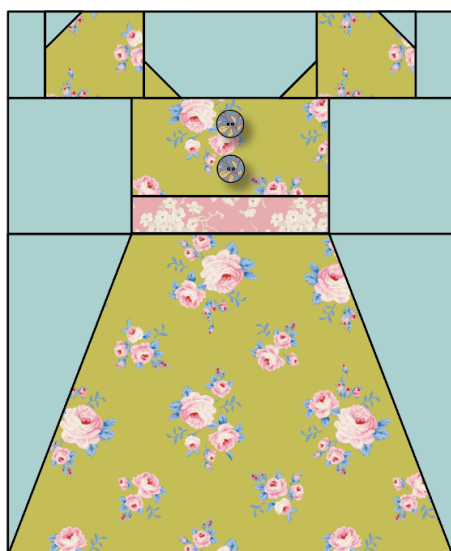
17 Make all of the pieced units needed for Dress Top 4 and then lay them out with the unpieced parts into roughly the layout of the unit. Sew the unit together following the stages in **Fig M**. Add the Dress Skirt unit to complete the block.

Fig M Assembling Dress Top 4



18 If you wish you could add some buttons to the dress blocks as a nice decorative touch. If sewing two buttons onto each dress top, as shown in **Fig N**, you will need a total of sixty buttons. Sew the buttons in place by hand with matching thread.

Fig N Adding buttons



Assembling the Quilt

19 The quilt is assembled into six rows first, with blocks alternated with vertical sashing strips. **Fig O** shows the arrangement, with the exact positions of the blocks. Lay out the blocks for each row and add the Sashing 1 strips, as shown. Sew each row together and press the seams open or towards the sashing. Each row should measure 57½in (146cm) long.

20 Now add the horizontal sashing strips between each row and at the top and bottom of the quilt (**Fig P**). Press the seams open or towards the sashing. Your quilt top is now finished.

Fig O Sewing the block rows together



Fig P Adding the horizontal sashing



Quilting and Finishing

21 If you are quilting the quilt yourself you now need to make a quilt sandwich – you can do this in various ways, as follows.

- Use large stitches to tack a grid through the layers of the quilt in both directions, with lines about 4in (10cm) apart.
- Use pins or safety pins to fix the layers together.
- Use fabric glue, sprayed onto the wadding to fix the layers together.

If you are sending the quilt off to be commercially long-arm quilted you won't need to make a sandwich, as this is done when the quilt is mounted on the machine. When the layers of the quilt are secured you can quilt as desired.

22 Use the prepared double-fold binding strip to bind your quilt. Sew the binding to the quilt by pinning the raw edge of the folded binding against the raw edge of the quilt. Don't start at a corner. Using a ¼in (6mm) seam, sew the binding in place, starting at least 6in (15.2cm) away from the end of the binding. Sew to within a ¼in (6mm) of a corner and stop. Take the quilt off the machine and fold the binding upwards, creating a mitred corner. Hold this in place, fold the binding back down and pin it in place. Begin sewing the ¼in (6mm) seam again from the top of the folded binding to within ¼in (6mm) of the next corner and then repeat the folding process. Do this on all corners. Leave a 6in (15.2cm) 'tail' of unsewn binding at the end.

23 To join the two ends of the binding, open up the beginning and end of the binding tails, lay them flat and fold the ends back so the two ends touch. Mark these folds by creasing or with pins – this is where your seam needs to be. Open out the binding and sew the pieces together at these creases. Trim off excess fabric and press the seam. Re-fold the binding and finish stitching it in place on the front of the quilt.

24 With the quilt right side up, use a medium-hot iron to press the binding outwards all round. Now begin to turn the binding over to the back of the quilt, pinning it in place. Use matching sewing thread and tiny stitches to slipstitch the binding in place all round, creating neat mitres at each corner. Press the binding and your Sunday Best quilt is finished.