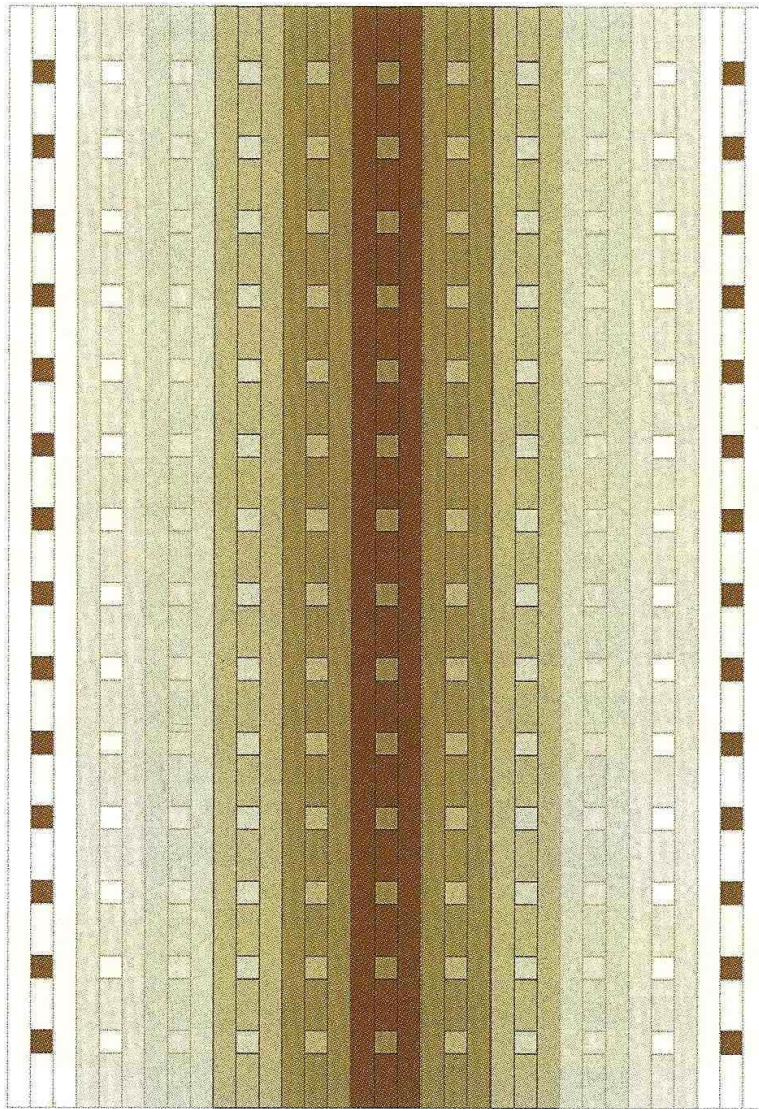


Quilt to Give Worksheet

Twin: 11 Columns—two strips sewn end to end (81")

Queen/Double: 13 Columns—two and a quarter strips sewn end to end (91")



F E D C B A B C D E F

Column Colors (colors)

A: _____

B: _____

C: _____

D: _____

E: _____

F: _____

Double/Queen

G: _____

H: _____

(OVER)

Patchy Center Strips: Twin—11 patchy strips, Double/Queen—13 patchy strips.

- Twin: Cut 48-50 crosswise strips in a variety of widths—1-1/2"—3-1/2".
- Double/Queen: Cut 58-60 strips in a variety of widths—1-1/2"—3-1/2".
- Twin: Sew four strata sets of patchy strips. Four lengths should measure a minimum of 81".
- Double/Queen: Sew four strata sets of patchy strips. Four lengths should measure a minimum of 91—81".

Inner Borders:

- Twin: cut eight, 1-1/2" crosswise strips. (1/2 yd. of fabric.)
- Double/queen bed quilt: cut nine, 1-1/2" crosswise strips. (1/2 yd. of fabric.)

Outer Borders:

- Twin: cut eight, 4-1/2" crosswise strips. (1-1/4 yds. of fabric.)
- Double/queen: cut nine, 4-1/2" crosswise strips. (1-1/2 yds. of fabric.)

Binding:

- **Twin:** Cut **nine** 2-1/2" crosswise strips for the binding:
- **Double/Queen:** Cut **ten** 2-1/2" crosswise strips for the binding: