

Quilt to Give™ Cutting Worksheet

quilttogive.com

This is a companion worksheet for the Quilt to Give™ community service project. Go to quilttogive.com for the step-by-step instructions.



Size Options

- | | |
|---------------------------------------|--------------------------------------|
| <input type="checkbox"/> Twin Quilt | <input type="checkbox"/> Queen Quilt |
| • 10 Columns w/ Single Border | • 13 Columns w/Double Borders |
| • Finished Size 66" x 88" | • Finished size 88" x 92" |
| <input type="checkbox"/> Double Quilt | <input type="checkbox"/> King Quilt |
| • 11 Columns w/Double Borders | • 15 Columns w/ Double Borders |
| • Finished size 80" x 96" | • 102" x 92" |

Column Color Options

- 2-color columns—alternate fabric colors



- Gradated Columns—single color in center with pairs of columns gradating outward. (Does not work for a Twin Quilt Layout.)



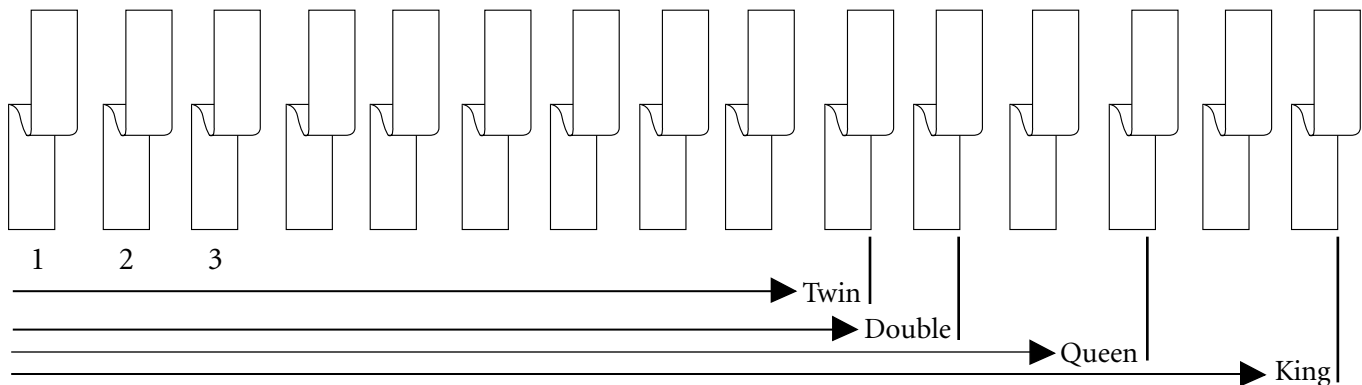
- 3-color columns—alternate fabric colors



- Varied columns



Column Layout



- Cut four (4) crosswise strips for for each column, 2-1/2" x width of fabric.
- Use colored pencils to fill in the color of each column in the above illustration.

2-1/2" Column Strips

Color	# Columns	# crosswise strips
Example Medium blue	3	X 4 = 12
_____:	_____	X 4 = _____
_____:	_____	X 4 = _____
_____:	_____	X 4 = _____
_____:	_____	X 4 = _____
_____:	_____	X 4 = _____
_____:	_____	X 4 = _____
_____:	_____	X 4 = _____
_____:	_____	X 4 = _____
_____:	_____	X 4 = _____

Patchy Center Strips

- Twin & Double: cut 50-55 crosswise strips in a variety of width: 1-1/2" —3-1/2"
- Queen: cut 60-65 crosswise strips in a variety of width: 1-1/2" —3-1/2"
- King: cut 70-85 crosswise strips in a variety of width: 1-1/2" —3-1/2"

Border Strips

- Twin: Cut eight (8) 3-1/4" crosswise strips (3/4 yds.)
- Double: For inner border, cut eight (8) 1-1/2" crosswise strips (1/3 yds.)
For outer border, cut eight (8) 6-1/2" crosswise strips (1-1/2 yds.)
- Queen: For inner border, cut eight (8) 1-1/2" crosswise strips (1/3 yds.)
For outer border, cut nine (9) 4-1/2" crosswise strips (1-1/4 yds.)
- King: For inner border, cut nine (8) 1-1/2" crosswise strips (3/8 yds.)
For outer border, cut ten (10) 5-1/2" crosswise strips (1-1/4 yds.)

Binding strips

- Twin: Cut eight (8) 2-1/2" crosswise strips (5/8 yds.)
- Double: Cut nine (9) 2-1/2" crosswise strips (3/4 yds.)
- Queen: Cut ten (10) 2-1/2" crosswise strips (3/4 yds.)
- King: Cut ten (10) 2-1/2" crosswise strips (3/4 yds.)